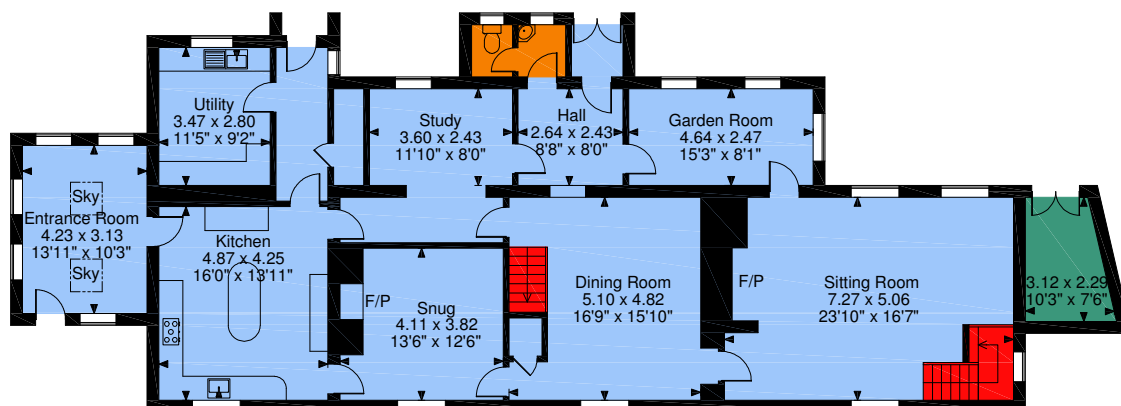
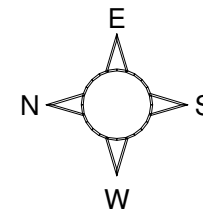
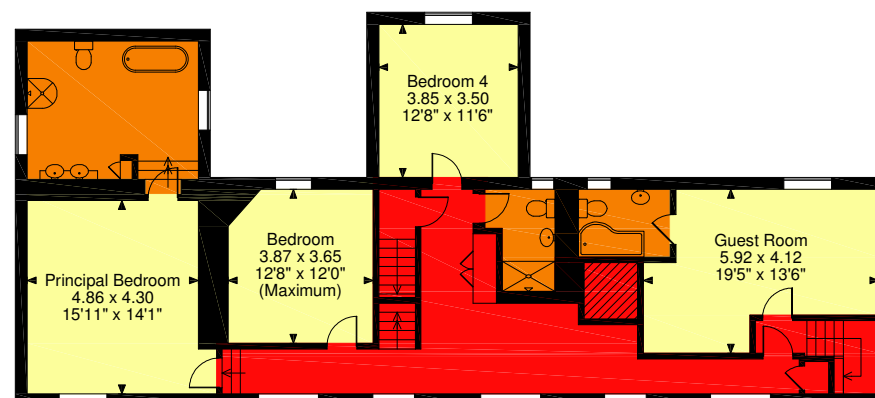


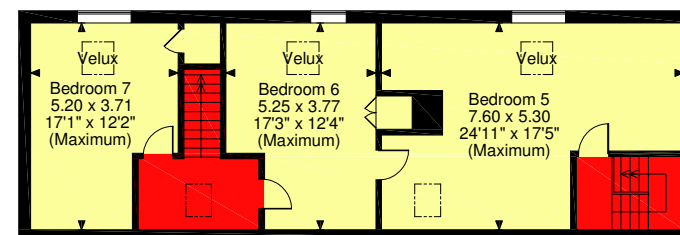
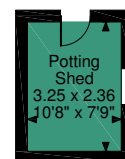
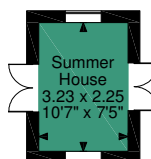
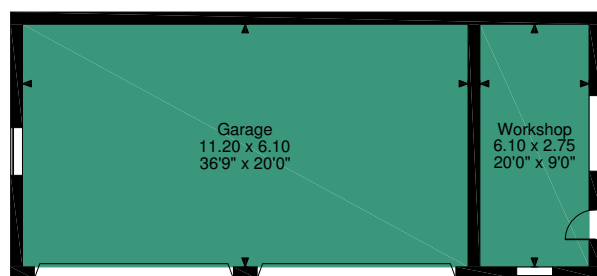
Manor House, Station Road, Womersley
Approximate Gross Internal Area
Main House = 4335 Sq Ft/403 Sq M
Garage & Workshop = 916 Sq Ft/85 Sq M
Outbuildings = 161 Sq Ft/15 Sq M
External Room = 65 Sq Ft/6 Sq M



Ground Floor



First Floor



Second Floor

FOR ILLUSTRATIVE PURPOSES ONLY - NOT TO SCALE

The position & size of doors, windows, appliances and other features are approximate only.

© ehouse. Unauthorised reproduction prohibited. Drawing ref. dig/8436123/SS