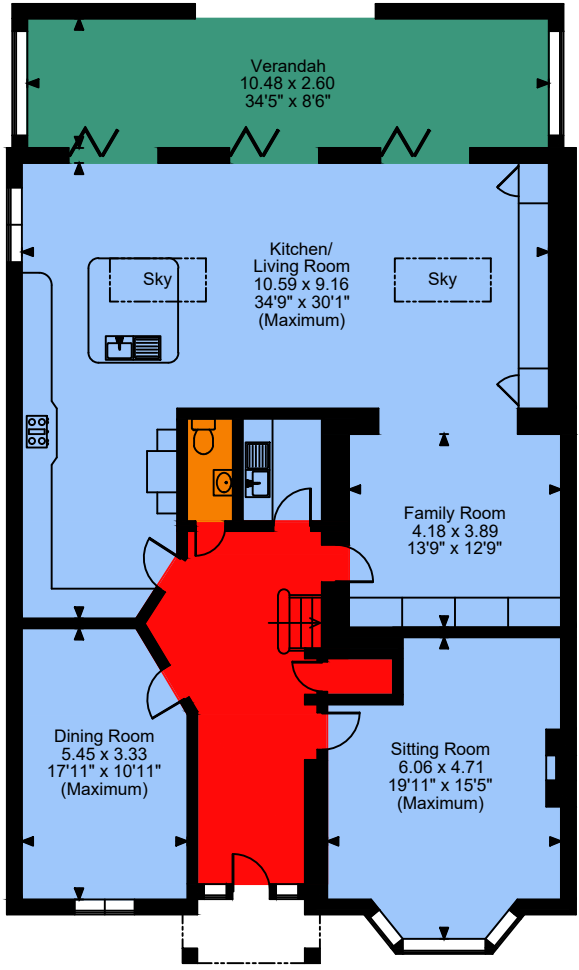
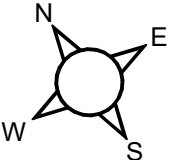
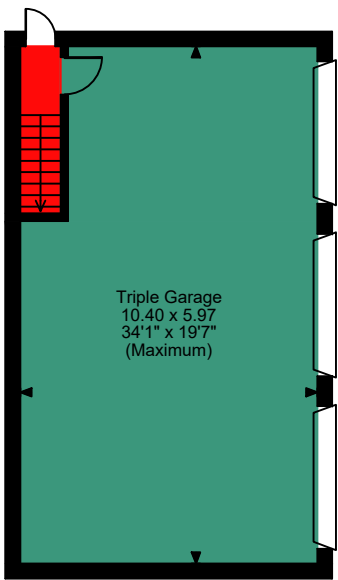


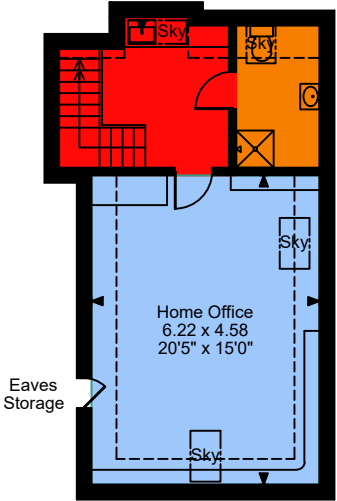
Hopgrove Lane South, York
Approximate Gross Internal Area
Main House = 3798 Sq Ft/353 Sq M
Garage Building = 1016 Sq Ft/94 Sq M



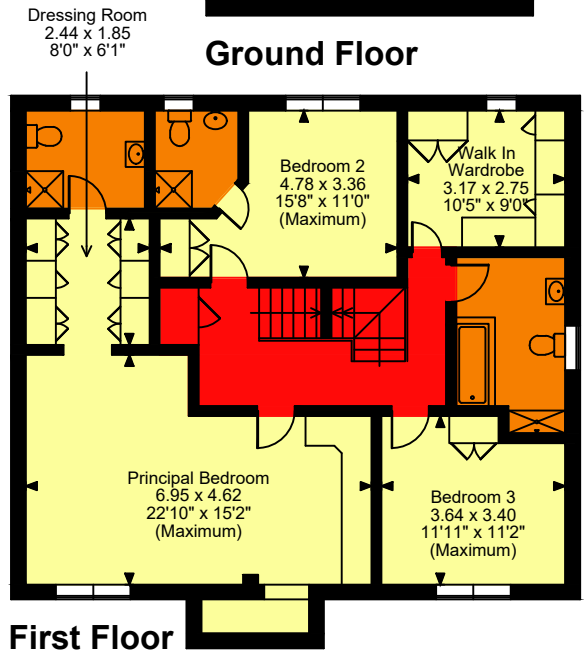
Ground Floor



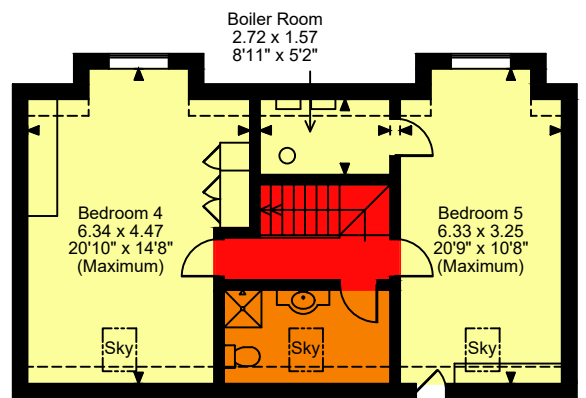
Ground Floor



First Floor



First Floor



Second Floor

FOR ILLUSTRATIVE PURPOSES ONLY - NOT TO SCALE

The position & size of doors, windows, appliances and other features are approximate only.

□ □ □ Denotes restricted head height