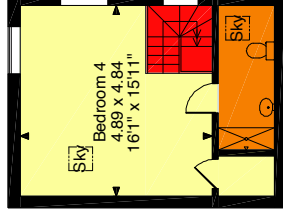
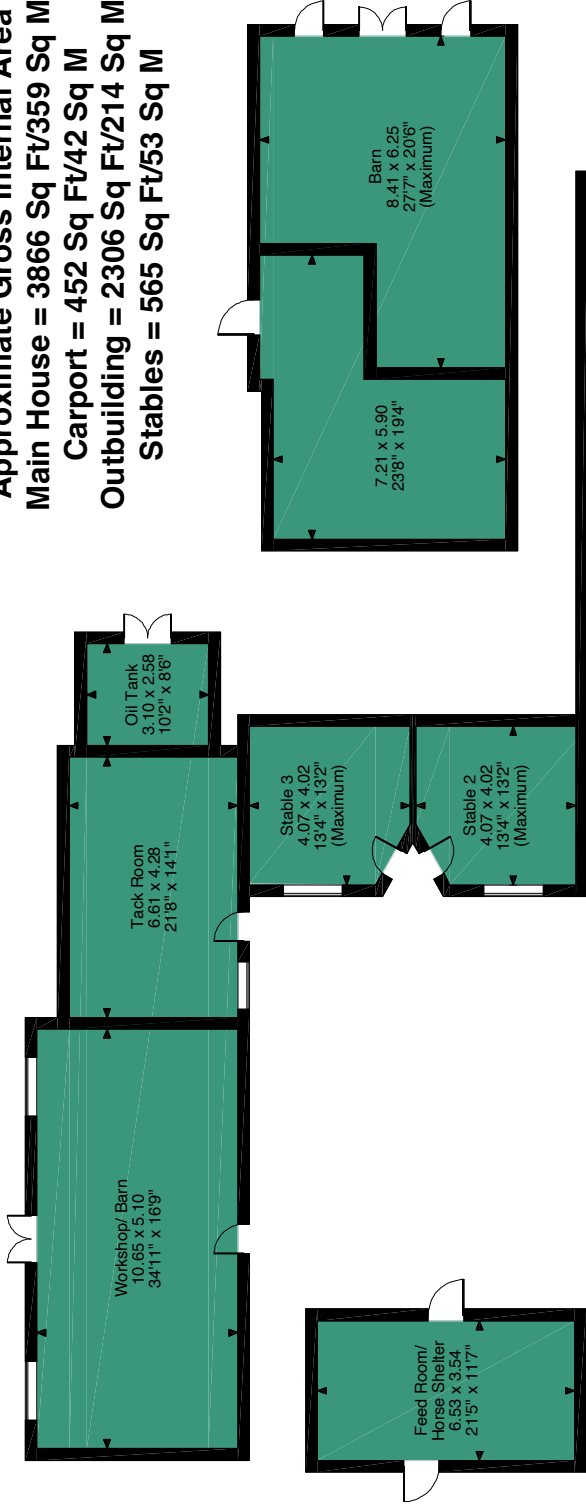
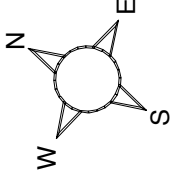
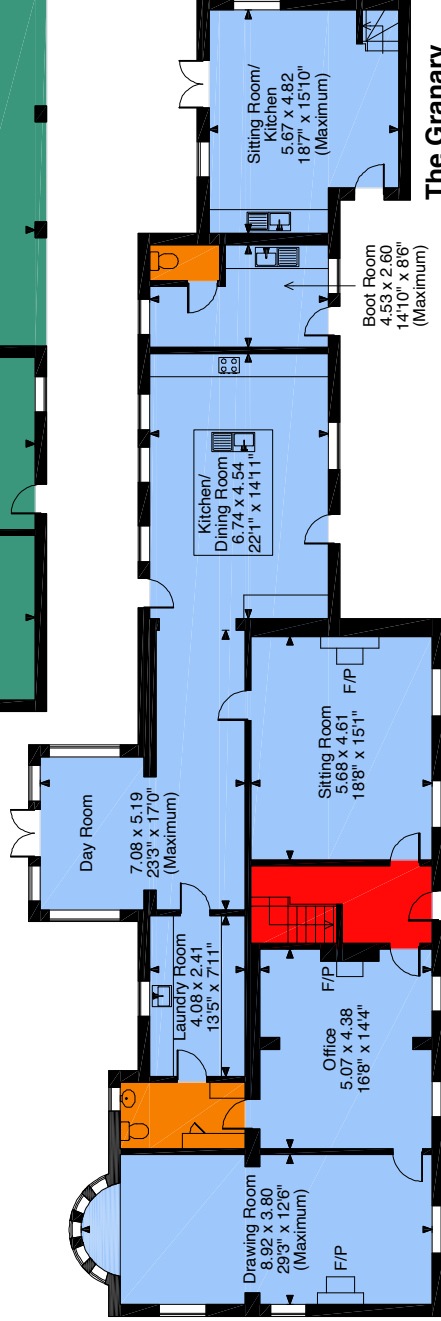


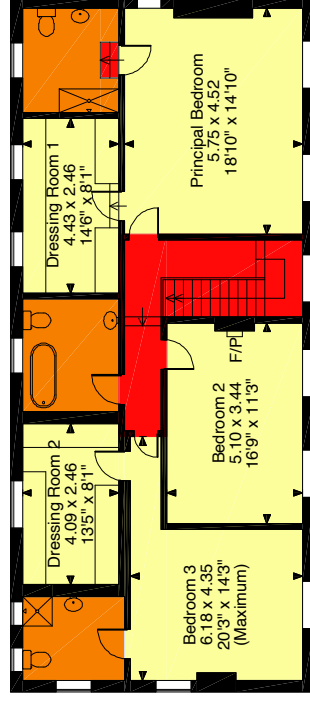
Green Dykes, Bagby, Thirsk
Approximate Gross Internal Area
Main House = 3866 Sq Ft/359 Sq M
Carpent = 452 Sq Ft/42 Sq M
Outbuilding = 2306 Sq Ft/214 Sq M
Stables = 565 Sq Ft/53 Sq M



The Granery First Floor



Ground Floor



First Floor

FOR ILLUSTRATIVE PURPOSES ONLY - NOT TO SCALE

The position & size of doors, windows, appliances and other features are approximate only.

© ehause. Unauthorised reproduction prohibited. Drawing ref. dig/8464163/LWA