

# The Old Parsonage, Boroughbridge Road, York

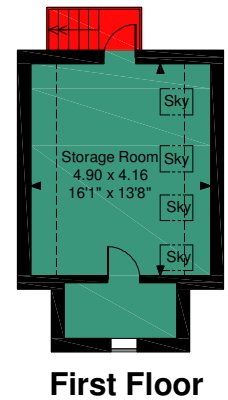
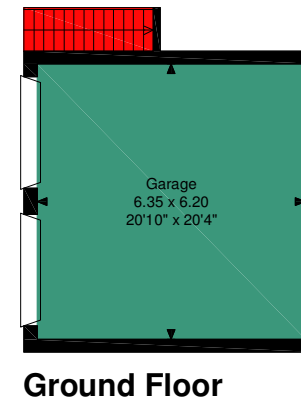
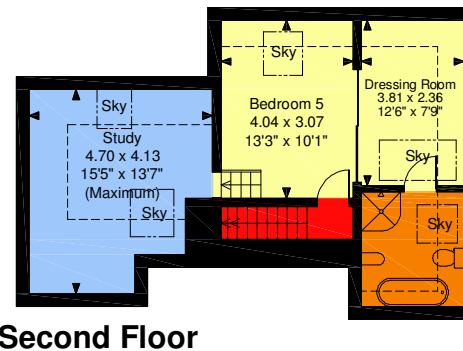
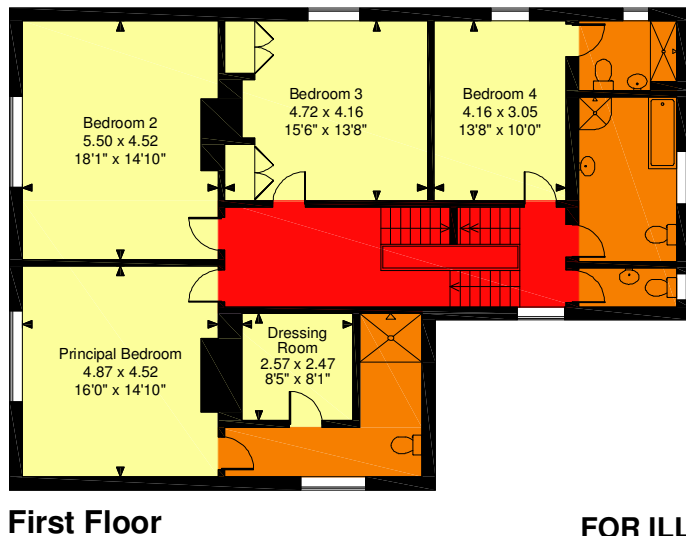
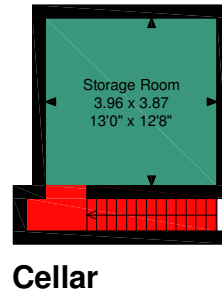
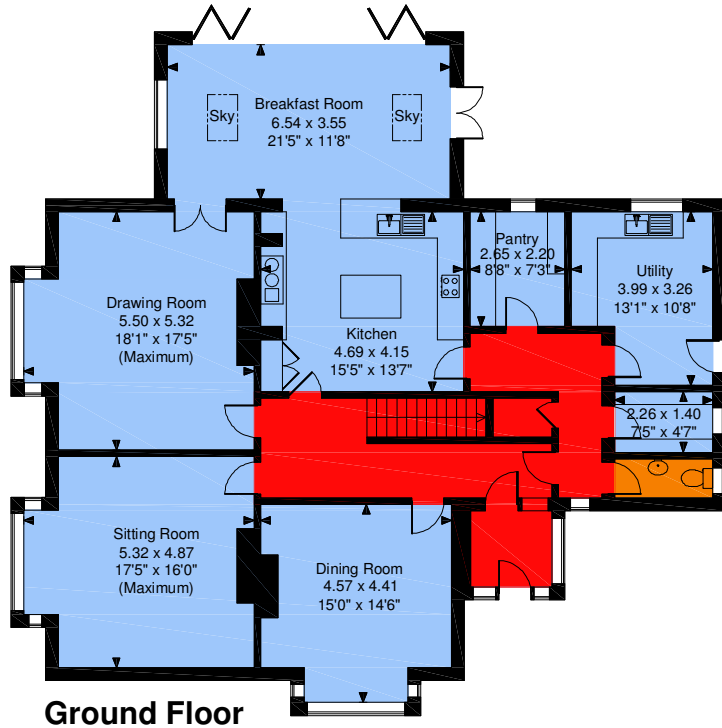
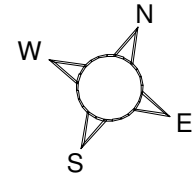
Approximate Gross Internal Area

Main House = 3799 Sq Ft/353 Sq M

Garage = 424 Sq Ft/39 Sq M

Annexe = 999 Sq Ft/93 Sq M

Office = 201 Sq Ft/19 Sq M



FOR ILLUSTRATIVE PURPOSES ONLY - NOT TO SCALE

The position & size of doors, windows, appliances and other features are approximate only.

□□□□ Denotes restricted head height

© ehouse. Unauthorised reproduction prohibited. Drawing ref. dig/8455624/SS